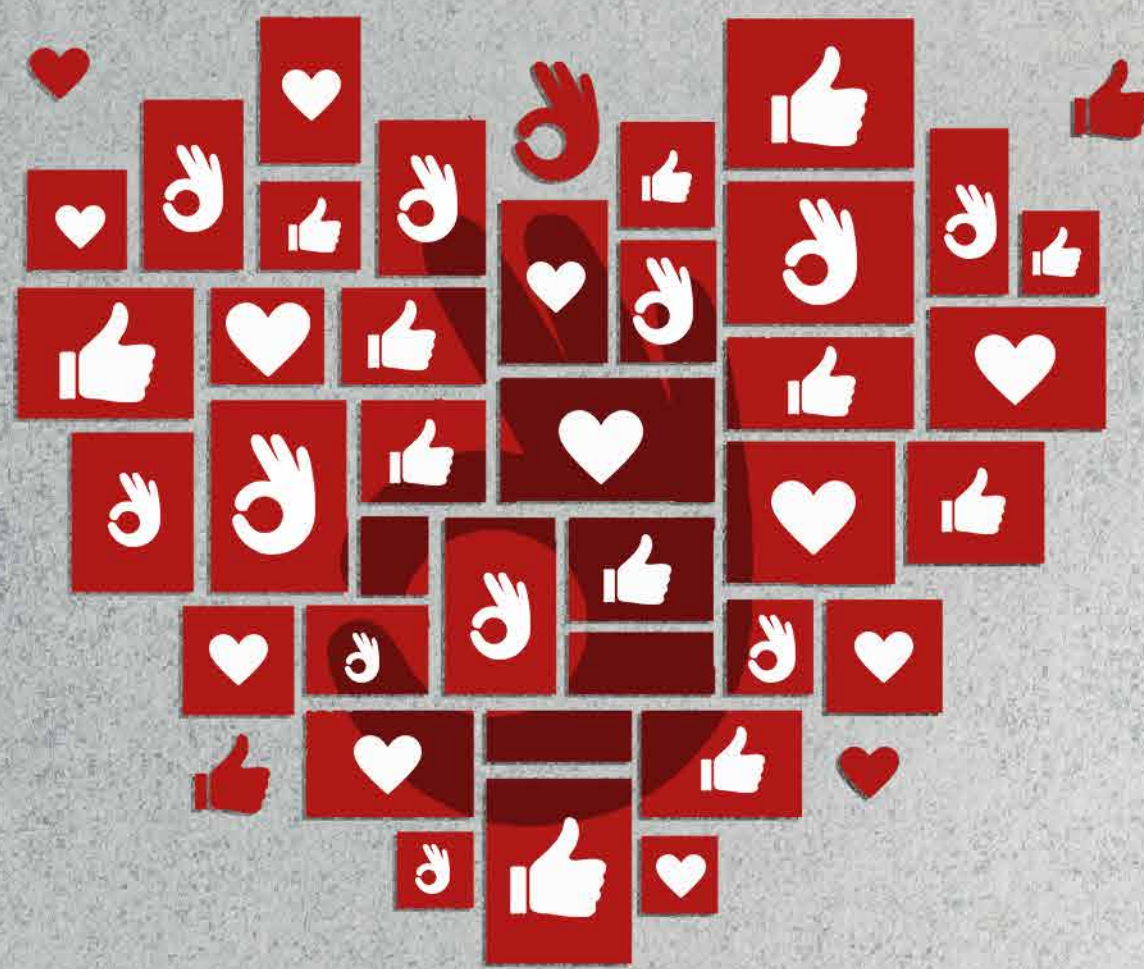


THE NEW
GLAMOUR
SIMPLY MAGNETIC



FOR NEARLY TWO DECADES,
**GLAMOUR HAS RULED
THE HEARTS OF MILLIONS**

NOW, ITS ALL-TIME FAVOURITE DESIGN MEETS
NEW-AGE FEATURES. TIME TO TAKE YOUR
ATTRACTION GAME TO THE NEXT LEVEL.



THE NEW
GLAMOUR
SIMPLY MAGNETIC

FULLY DIGITAL CONSOLE

AFTER ALL, GOING DIGITAL
IS A BRIGHT IDEA.



HOST OF FEATURES, IN ONE DISPLAY.

- DIGITAL SPEED DISPLAY
- ODOMETER
- FUEL LEVEL INDICATOR
- DUAL TRIP METER
- SERVICE REMINDER
- SIDE STAND
ACTIVATION INDICATOR
- i3S INDICATOR
- LOW FUEL INDICATOR
- TURN INDICATOR
- HIGH BEAM INDICATOR
- NEUTRAL INDICATOR



THE NEW
GLAMOUR
SIMPLY MAGNETIC

STYLISH CHEQUERED STRIPES

GETS YOU ALL THE ATTENTION,
ALL THE TIME.



THE NEW
GLAMOUR
SIMPLY MAGNETIC

REAL TIME MILEAGE INDICATOR

WANT MORE MILEAGE? SEE IT IN
REAL TIME AND RIDE ACCORDINGLY.



THE NEW
GLAMOUR
SIMPLY MAGNETIC

USB CHARGING PORT

STAY CHARGED, ON THE GO.



THE NEW
GLAMOUR
SIMPLY MAGNETIC

SIDE STAND INDICATOR

YOU MAY FORGET IT.
THE BIKE WON'T.



THE NEW
GLAMOUR
SIMPLY MAGNETIC

i3S TECHNOLOGY

**CUTS OFF ENGINE WHEN IDLE TO
REDUCE EMISSIONS AND BOOST MILEAGE.**



THE NEW
GLAMOUR
SIMPLY MAGNETIC

COMFORTABLE SEAT

LONG RIDES WILL NO LONGER
BE UNCOMFORTABLE.



THE NEW
GLAMOUR
SIMPLY MAGNETIC

POWERFUL 125CC ENGINE

LEAVE THE JEALOUS BEHIND,
WITH JUST A TWIST OF YOUR WRIST.

POWER
7.75 KW @7500 RPM

Hero



THE NEW
GLAMOUR
SIMPLY MAGNETIC

XSENS FI TECHNOLOGY

SENSOR BASED TECH THAT BOOSTS BOTH
PERFORMANCE AND FUEL EFFICIENCY.



THE NEW
GLAMOUR
SIMPLY MAGNETIC

170MM GROUND CLEARANCE

**RIDE OVER BAD ROADS
WITH FULL CONFIDENCE.**



THE NEW
GLAMOUR
SIMPLY MAGNETIC

THREE MAGNETIC COLORS

CHOOSE THE ONE THAT MATCHES
YOUR VIBE.

CANDY BLAZING RED



SPORTS RED BLACK



TECHNO BLUE BLACK



THE NEW
GLAMOUR
SIMPLY MAGNETIC

SPECIFICATIONS

Engine	
Engine Type	Air Cooled, 4 Stroke
Max. Power	7.75 Kw @ 7500
Max. Torque	10.4 Nm @ 6000
Bore X Stroke	52.4mm X 57.8mm
Fuel System	Fuel Injection
Acceleration 0-60kmph (sec)	6.7
Wheels & Tyres	
Wheel Type	Alloy
Front Tyre	80/100 -18" TL
Rear Tyre	100/80 - 18" TL
Suspensions	
Front Suspension Type	Dia. 30 Telescopic fork - 105 Stroke
Rear Suspension Type	5-Step adjustable - 73.5mm Stroke, Hydraulic Shock Absorbers
Chassis	
Clutch Type	Wet Multi Plate
Transmission Type	Constant Mesh, 5 Speed
Frame Type	Diamond
Swing Arm	Tubular - Fabricated
Brakes	
Front Brake Type	Disc - Dia 240 mm, Drum - Dia 130 mm
Rear Brake Type (with CBS)	Drum - Dia 130 mm
Dimensions	
Overall Length (mm)	2042
Overall Width (mm)	742 (DISC) 720 (DRUM)
Overall Height (mm)	1090
Seat Height (mm)	790
Wheel base (mm)	1267
Ground Clearance (mm)	170
Trail (mm)	88
Fuel Tank Capacity (L)	10 L
Kerb Weight (kg)	121.3 (Drum Self Cast) 122.5 (Disc Self Cast)

Regd. Office: Hero MotoCorp Limited, The Grand Plaza, Plot No.2, Nelson Mandela Road, Vasant Kunj - Phase -II, New Delhi - 110070, India. CIN: L35911DL1984PLC017354. Phone No.: 011 - 46044100. For further information, contact nearest Hero MotoCorp authorised outlet or call our toll free no.: 1800 - 266 - 0018 or visit us on www.heromotocorp.com. Accessories and features shown may not be part of standard fitment. Always wear a helmet while riding a two wheeler.



Scan the QR Code To Know More



*Conditions apply.

THE NEW
GLAMOUR
SIMPLY MAGNETIC